



DENZA D9

REDEFINING SOPHISTICATION



Power that Redefines Elegance

The DENZA D9 is a game-changer in luxury mobility. This all-electric seven-seater MPV combines a powerful eight-in-one motor and a Blade Battery for an extraordinary driving experience while keeping safety at its core.

Available in front-wheel drive configuration, the DENZA D9 offers an impressive electric driving range of up to 600 km. With the comfort of second-row seats and spacious interior space, plus a massage function and an in-car refrigerator, the DENZA D9 enhances your journey.



Waistline to Meteor Track

The DENZA D9's design flows seamlessly from the classic waistline to the meteor track-inspired curves, combining elegance with dynamic performance.



Motion Front Grill

The DENZA D9's sleek exterior merges the precision of π with smooth motion, featuring a minimalist π -Motion front design that radiates modern elegance.



Arrow Tail Light

Our Arrow Tail Light adopt a refined vertical design, accentuated by the iconic π symbol to enhance the visual impact.



Middle Row Electric Sliding Door

With the touch of a button or a sensor activation, the door slides open automatically, providing a hands-free experience that adds a level of luxury and convenience.



Electric Trunk with Position Memory and Anti Pinch

The enormous 410L to 570L trunk (fits up to 7 large suitcases) can accommodate any lifestyle need. With enough room for a large air bed, the DENZA D9 takes luxury road trips to the next level.





Multi-color Ambient Lighting | 15.6 Inch Head Unit with Voice Control "Hi DENZA" | Three Zone Independently A/C



Seven Seats, Equally Superb

The second-row seats utilize a 1,080 mm long electric slide rail, creating a spacious interior for all passengers to enjoy the luxury of the DENZA D9.

Immersive Acoustics

The DENZA D9 is equipped with 14 Dynaudio speakers and 7.1-channel surround sound technology. Custom-tuned by Dynaudio's chief tuner Bjarke, it creates a concert-like auditory experience.

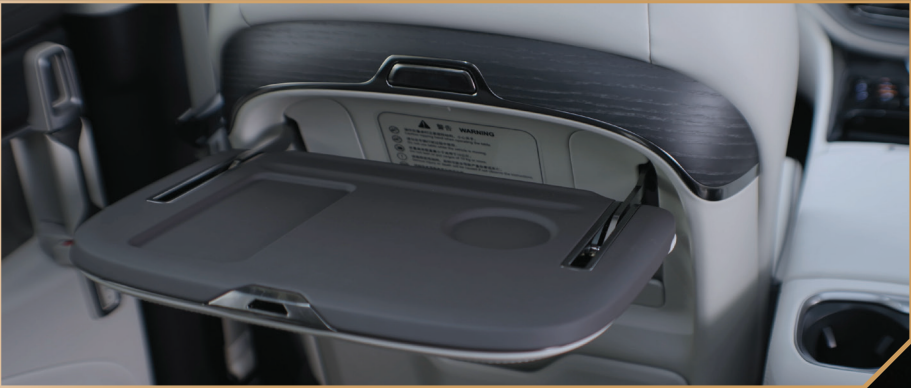


Integrated Refrigerator

The middle row has a smart beverage cabinet with a heating/cooling box, electric tray, and cup holders. The box supports cloud control, a forgotten-item reminder, and a temperature range -6 °C to 50 °C.

Retractable Table

The Retractable Table has a sleek, simple design and is built for comfort. It's easy to use, offering space for eating, working, or entertainment during your trip.





Massage & Ventilated Seat

The DENZA D9's captain seats feature an electric slide rail, creating an exceptionally spacious interior. The ergonomic, zero-gravity seats are made from the finest leather and include a ventilated seat function. They come equipped with ten-way electric adjustment, six-way adjustable sleeping headrests, electric leg rests, and wide-angle backrest adjustment with a massage function.

Panoramic Roof

A vast panoramic roof fills the cabin with natural light, while the double-layer glass blocks 99% of UV rays.





Comfortable Third Row

The DENZA D9 offers a comfortable third row with ample space, designed to ensure a relaxed and enjoyable ride for all passengers.

Multifunctional Dual LED Screen

With its multifunctional dual LED screen, the DENZA D9 ensures effortless control and a premium experience for passengers.



Detailed Safety Features & Performance



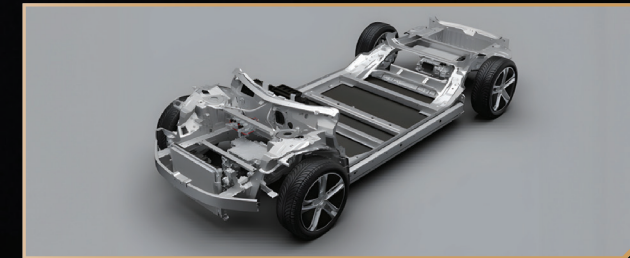
Complete Protection

All-round protection for everyone with strategically placed airbags in all three rows.



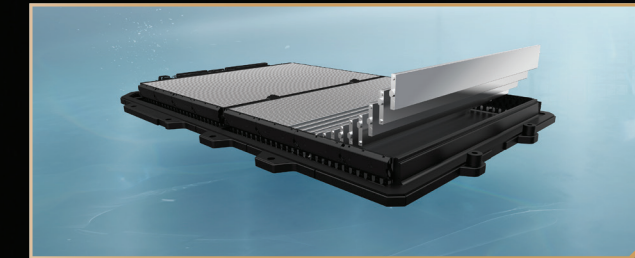
Uncompromised Safety

Uncompromising safety with a high-strength steel frame and advanced collision protection.



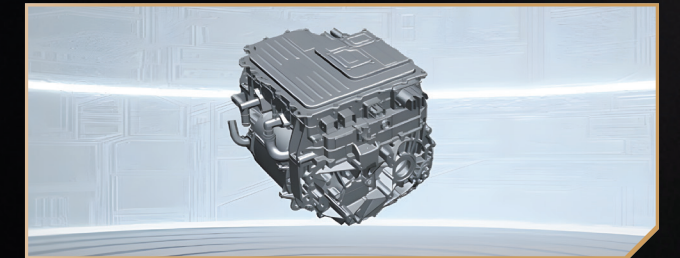
e-Platform 3.0

Exclusive platform combined with the power of Blade Battery, offers driving experience & journey like no other.



Blade Battery

Advanced battery technology for safely ultimate confident performance.



8 in 1 Electric Powertrain

DENZA D9 features an innovative powertrain that optimizes space and ultimate performance.

Wheelbase
3110 mm

Maximum Power
275 kW

Range (NEDC)
580 km

0-100km/h acceleration
6.9 s

Experience the Future of Luxury Mobility

You don't just need a car—you deserve a symbol of innovation and luxury.

With DENZA, you get advanced technology, sustainable performance, and sleek design. The DENZA D9 is an all-electric seven-seater MPV, combining power, elegance, and safety for an exceptional experience. Elevate your journey with DENZA.



Exterior Color

Take your pick from three stunning shades inspired by nature's magnificence.



Arctic White



Whale Sea Blue



Cosmos Black

Interior Color

Choose between two earth-toned interior colors, adorned with real white oak trims.



Beige

*Beige option is only available for AWD-Whale Sea Blue variant



Brown

Specification

Item	Advanced-FWD	Premium-AWD
Dimensions		
Overall length (mm)	5,250	
Overall width (mm)	1,960	
Overall height (mm)	1,920	
Wheelbase (mm)	3,110	
Wheel track - front/rear (mm)	1,675	
Min. turning radius (m)	5.95	
Luggage capacity - Min (L)	410	
Luggage capacity - Max (L)	2,310	
Tire	235/60 R18	
Kerb weight (kg)	2,764	2,764
Gross vehicle mass (kg)	3,338	3,338
Powertrain & Performance		
Battery type	BYD Blade(LFP) battery	
Battery capacity (kWh)	103.6	
AC MAX charging power (KW)	11 (3-phase)	
DC Max charging power (kW)	166	
Motor type	Permanent magnet synchronous motor	
Maximum power of front motor (kW)	230	
Maximum torque of front motor (N · m)	360	
Maximum power of rear motor (kW)	-	45
Maximum torque of rear motor (N · m)	-	110
Comprehensive maximum power of the system (kW)	230	275
Maximum comprehensive torque of the system (N · m)	360	470
Driving type	FWD	AWD
0~100km/h acceleration time (s)	9.5	6.9
Pure electric range (km) (NEDC Homologation)	600	580
Braking & Suspension		
Front suspension	Macpherson strut	
Rear suspension	Multi-link	
Front/Rear brake	Ventilated disc	
Intelligent power brake control system	•	•
FSD variable damping suspension	•	-
DiSus-C intelligent damping suspension	-	•
Seat Configuration		
2+2+3 style three-row seating distribution	•	•
Premium leather seats	•	-
Premium NAPPA leather seats	-	•
8-way power adjustable front seats	•	•
Front seat headrest wing adjustment	•	•

Item	Advanced-FWD	Premium-AWD
Seat Configuration		
Front seat massage	-	•
Ventilated front driver's seat	•	•
Driver's seat memory	•	•
4-way power adjustable lumbar support for front seats	•	•
Center table	•	•
4-way power adjustable center seat	•	•
Center seat massage	•	•
Center seat memory	•	•
Ventilated center seat	•	•
Center seat 4-way power adjustable lumbar support	•	•
Power adjustable legrests for middle seat	•	•
Manually adjustable center seat headrest flanks	•	•
Manually adjustable center seat headrest angle	•	•
Center row adjustable passenger seat (boss button)	•	•
Rear seat 4-way manual adjustment	•	•
Rear seat height headrests manually adjustable	•	•
4 ISO-FIX child seat anchors	•	•
Rear seat backrests 4:6	•	•
Luxury Cabin		
Premium suede headliner	-	•
Knitted fabric roof	•	-
Multi-color ambient lighting	•	•
Tactile LED front, center and rear interior lights	•	•
Automatic anti-glare interior mirrors	-	•
Manual anti-glare interior mirrors	•	-
Streaming interior rearview mirror	-	•
Multi-function steering wheel	•	•
4-way manually adjustable steering wheel	•	•
Automatic climate control with three temperature zones	•	•
Individual air vents for center and rear rows	•	•
Danner 14-speaker HiFi audio system	•	•
Car refrigerator	•	•
CN95 high efficiency filter with activated carbon	•	•
PM2.5 Green Purification System	•	•
Negative ion air purifier	•	•
Remote High Temperature Sterilization and Disinfection	•	•
6 USB ports (Type A+Type C)	•	•
Front 12V car power port	•	•
350W wireless cell phone charging (Front 1+Middle 2)	•	•

Specification

Item	Advanced-FWD	Premium-AWD
New Energy Science and Technology		
Reservation charging system	•	•
Battery intelligent temperature control management system	•	•
Wide temperature range efficient heat pump air conditioning	•	•
Smart electronic shift	•	•
Brake energy recovery system	•	•
Standard/Economy/Sport/Snow Driving Modes	•	•
V2L external discharge function	•	•
DENZA Link Ultra-intelligent Interactive Cockpit		
15.6-inch ultra-high-definition center control suspension screen	•	•
10.25-inch embedded full LCD 3D instrument cluster	•	•
W-HUD head-up display (12-inch)	-	•
Multi-function dual LCD screen in the center armrest of the middle row	•	•
Four-tone zone voice interaction system	•	•
In-vehicle Bluetooth system	•	•
3D high-definition transparent panoramic image system	•	•
Keyless entry and one-touch start system	•	•
Remote Start Vehicle	•	•
Remote Control Air Conditioning	•	•
Apple CarPlay	•	•
Android Auto	•	•
Car WIFI Hotspot	•	•
4G Network Connection	•	•
OTA Remote Upgrade	•	•
Bluetooth Key	•	•
Electronic Key	•	•
NFC car key*	•	•
Driver Assistance Systems		
Full-speed adaptive cruise control (ACC)	•	•
Forward Collision Warning (FCW)	•	•
Automatic Emergency Braking (AEB)	•	•
Rearward Collision Warning (RCW)	•	•
Rear Cross Traffic Alert (RCTA)	•	•
Rear Cross Traffic Braking (RCTB)	•	•
Lane Intelligent Pilot (ICC)	•	•
BSD Blind Spot Monitor	•	•
Forward Traffic Crossing Alert (FCTA)	-	•
Forward Traffic Crossing Braking (FCTB)	-	•
Emergency Lane Keeping Assist (ELKA)	•	•
Traffic Sign Recognition (TSR)	•	•

Item	Advanced-FWD	Premium-AWD
Driver Assistance Systems		
Intelligent Driving Domain Controller	-	1
Sensors (EPS)	1	1
Ultrasonic Radar	8	12
High Precision Millimeter Wave Radar	3	5
Smart Driving Surround View Camera	4	4
Smart Driving High Perception Camera	1	1
Security Configuration		
Electric Power Steering (EPS)	•	•
Electric Parking Brake System (EPB)	•	•
Auto hold	•	•
Hydraulic Brake Boost	•	•
Hydraulic Brake Assist	•	•
Intelligent power braking system	•	•
Electronic Stability Control (ESC)	•	•
Traction Control System (TCS)	•	•
Electronic traction control system (ETC)	•	•
Electronic brake pre-charging system (EBP)	•	•
Controller Deceleration Parking (CDP)	•	•
Vehicle dynamic control system (VDC)	•	•
Electronic Brake Force Distribution (EBD)	•	•
Hill Hold Control (HHC)	•	•
Control System Traction (CST)	•	•
Brake disc wiping system (BDW)	•	•
Coordinated regenerative braking system (CRBS)	•	•
Roll Movement Intervention (RMI)	•	•
Hill Descent Control System (HDC)	•	•
Door opening warning (DOW)	•	•
Driver fatigue monitoring (DFM)	-	•
Driver distraction detection	-	•
Tyre Pressure Monitoring System (TPMS)	•	•
Automatic unlocking by collision sensing	•	•
Front positive airbag	•	•
Front side air bag	•	•
Middle row side airbag	•	•
Front, middle and rear integrated ultra-long side air curtain	•	•
Front double pre-tighten seat belt	•	•
Middle row pretension limited force seat belt	•	•
Rear non pre tensioned force limiting seat belts	•	•

Specification

Item	Advanced-FWD	Premium-AWD
External Cnfiguration		
LED headlights	•	•
Auto On Headlamps	•	•
Intelligent High Beams (IHBC)	•	•
Headlight advance on/delay off function	•	•
LED cornering assist lamps	•	•
LED Daytime Running Lights	•	•
LED Rear Runner Turn Signal Lamps	•	•
LED high-mounted brake lights	•	•
Intelligent sensor dynamic welcome headlights	-	•
Multi-color charging port light	•	•
Rear door sill welcome light	•	•
Rain-sensing automatic boneless wiper	•	•
Openable electric sunroof (with electric sunshade)	•	•
1.1 m³ panoramic sunroof (with electric sunshade)	•	•
Fully insulated glass	•	•
Double-layer sound-insulating glass	•	•
Privacy glass	•	•
One-touch window glass lifting	•	•
Exterior mirrors electrically adjustable, heated, defrosted	•	•
Exterior mirrors electric folding, locking automatic folding	•	•
Outside rearview mirror position memory	•	•
Outside rearview mirror blind spot indicator	•	•
Main and passenger side power suction door	•	•
Power sliding door for center row and both sides	•	•
Remote control door lock	•	•
18-inch low wind resistance wheels	•	•
Michelin/Marlin tires	•	•
Silent self-repairing tires	-	•
Power trunk with position memory	•	•

- Remarks:**
1. In order to better meet customer needs, DENZA Auto constantly develops and improves cars. Some configurations and specifications of models sold in the market may be different from those in this configuration table.
 2. Tire brands include Michelin and Continental tires, the specific tire brand is subject to the actual delivery vehicle.
 3. DENZA Link ultra-intelligent interactive cockpit will be continuously upgraded, the specific functions may be different from this configuration table, some functions need third-party software, hardware support or OTA implementation, the specific details please refer to the real car or the latest Denza Link system.
 4. Apple CarPlay® is a registered trade mark of Apple Inc. Requires compatible device,USB connection.
 5. Mobile phone NFC car key requires the mobile phone to have NFC function, and the mobile phone manufacturer authorized DENZA Automobile to enable the relevant functions of the mobile phone, the specific support for the mobile phone model, please contact the local DENZA direct store or the actual situation of the mobile phone you use.
 6. About pure electric range: In actual road driving, different ambient temperatures, driving habits and maneuvers will lead to different endurance.

PRICE PACKAGE	Advanced-FWD		Premium-AWD	
	personal	company	personal	company
Registration Fee	RM300	RM500	RM300	RM500
HP Ownership Fee			RM50	
EV Plate Fee			RM200	
Inspection Fee			RM200	



Brand Story

DENZA was founded in 2010 with a focus on creating luxury new energy vehicles. From the start, it has prioritized collaboration with users and aimed to build a smart, safe, and sensory-driven luxury car brand.

After 14 years of growth, DENZA has continued to innovate and strengthen its products. In 2022, the brand introduced the D9, N7, and N8 models, committed to offering a new luxury experience and optimizing travel for users worldwide, while opening up new possibilities for the future of electric luxury cars.



Where Luxury Meets Comfort and Exceptional Service



📍 **Harmony KLCC**
Podium Ground Floor,
161B, Menara Atlan,
Jalan Ampang, 50450
Kuala Lumpur.

📍 **Millennium KL North**
Lot 2097, Jalan 1/42, Off
Jalan Kuching, 51200
Kuala Lumpur, Malaysia.

📍 **Harmony Skudai**
No. 3 Jalan Persiaran Danga
(Danga Bay), 81200 Johor
Bahru, Johor.

📍 **SKK Motors Melaka**
Lot 9148, Jalan IMJ 1,
Taman Industri Malim
Jaya, 75250 Melaka.

📍 **Sisma Glenmarie**
No. 21, Jalan Perintis,
Temasya Industrial Park,
Glenmarie, 40150 Shah
Alam, Selangor, Malaysia.

📍 **Sime Motors OKR**
193-195, Batu 3 3/4, Jalan
Klang Lama, 58100 Kuala
Lumpur, Wilayah Persekutuan
Kuala Lumpur, Malaysia.

📍 **Wing Hin Balakong**
No.1-1, Kompleks Komersil
Akasa, Akasa Cheras Selatan
Balakong, 43300 Seri
Kembangan, Selangor.








Dealer Stamp

DENZA Malaysia

www.denza.com/my

Copyright @ Denza Malaysia Company. All Rights Reserved.

 @DENZA Malaysia  @denza_malaysia  @denza.malaysia  @DENZA Malaysia  @denza_malaysia